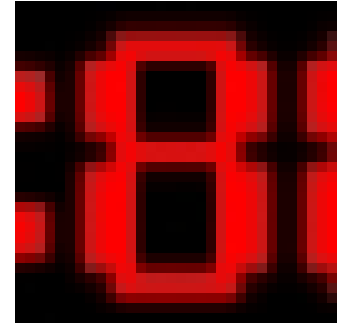


USER GUIDE

A RYAN GRABOW PROGRAM

WAKE UP! PRO

VERSION 2.5 (FINAL RELEASE)



WELCOME TO WAKE UP! PRO	2
ABOUT THIS MANUAL	2
INSTALLATION	3
VB6 RUNTIME FILES	3
GNU GENERAL PUBLIC LICENSE	3
WHAT'S NEW IN VERSION 2.5	4
PAVEMENT	4
THE FIRST THING YOU'LL SEE IN THE MORNING	5
KEEPING THE SAFETY ON (SINCE IT'S LOADED)	5
AS YOU LIKE IT (VIEW PRESETS)	6
BOSSING ALARMS AROUND (ALL 100 OF 'EM)	7
"MAIN" SETTINGS	8
USING YOUR COMPUTER AS AN ALARM CLOCK	9
CRANKING UP YOUR ODDS	9
TROUBLESHOOTING	10

Welcome to Wake Up! Pro

I have never been a morning person. The idea of a versatile PC-based alarm clock came to me one morning when I had overslept and shown up late for my radio show at Long Island University. Normal alarm clocks just weren't cutting it... they can all be snoozed, shut off, turned down, unplugged. I went all mad scientist and made sure that I would never oversleep again. What did I make? An alarm clock that wouldn't shut up.

Since Wake Up! Pro's first release in 2004, I've received a lot of positive feedback and suggestions from users from every corner of the globe. It was my pleasure to recreate a bigger, better, WUP with all your suggestions in mind. Version 2.5 is built on the powerful 2.x architecture, adding still more power and flexibility to fill all your get-my-butt-outta-bed needs. The software can be used as a harmless desktop clock or a merciless noise maker that will blast you out of bed and keep you from dozing off again. With the right hardware setup (see "Cranking up your odds" p.9), WUP can be as good as a bucket of water hanging over the bed!

People ask me why I make this free. Because programming is a hobby for me, not a business. I don't want to worry about prices or warranties or sales methods or anything. I'm not a salesman, I'm an artist, darn it. I'm not saying I won't ever come out with a commercial version, but for now I just want to have fun making the best PC programs I know how. WUP was made with a heavy dose of imagination and designed with everyone in mind. So to those of you who always stay up too late surfing the net and watching anime, I hope this program solves your morning alarm clock dilemmas. It's scary to see how far this idea has gone in only two major versions... of course, even as I type this, there is a new mad scientist list for 3.0... but that's a while away. I can't make Wake Up! Pro great without *you*, though, so keep making suggestions!

About this manual

This manual was revised for the release of version 2.5. Version 3.0 is the next planned release, though I doubt I'll be starting on it soon. You can check for new releases on the WUP website.

Official Wake Up! Pro website:

<http://www.egrabow.com/wakeuppro/>

E-mail address:

software@egrabow.com

Note: *Keep in mind that there is no guaranteed support for this program, if something doesn't work, I'm not making any promises that I can make it work. But, again, this is a learning experience and I appreciate reports regarding how the program runs (good, bad, so-so), etc. If reporting a problem, please be detailed so that I can get to the bottom of it faster.*

Installation

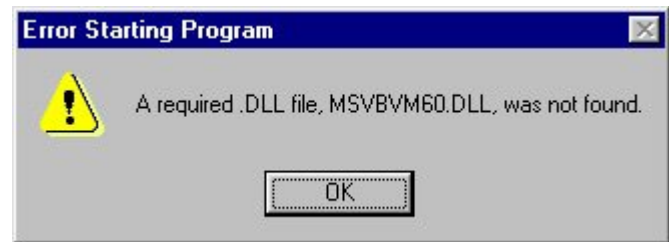
Wake Up! Pro is available with an NSIS installer, which I have found very reliable for Windows installations. This is what will be installed:

- ⇒ The Program (duh)
- ⇒ A .pdf copy of this manual
- ⇒ Alarm tones
- ⇒ Chassis and clock backgrounds
- ⇒ Shortcuts you specify (Start Menu, Desktop, Quick Launch)
- ⇒ Pavement
- ⇒ Version history file
- ⇒ Uninstaller program (but we we're having such a good time!)

Note: Version 2.5 is only available for Windows and has not been tested with encapsulators.

VB6 Runtime Files

If using Windows XP, you should be able to ignore this part. Windows 98/98SE/Me (and I think 2000) don't come with the necessary system files to run Wake Up! Pro already installed. If you click on the Wake Up! Pro icon and see the message at right, you'll need to use Microsoft's installer program (at <http://download.microsoft.com/download/vb60pro/install/6/win98me/en-us/vbrun60.exe> - yeah, long link... you can get to it through the WUP website if you like).



In some cases, you may see a message saying one of these files is out of date: COMDLG32.OCX, MSCOMCT2.OCX, mscomctl.ocx, or MSFLXGRD.OCX, MCI32.OCX (added in version 2.1)

These files are not installed by the Microsoft installer and we're not used in version 1 of Wake Up! Pro. All four should have been installed (if there weren't already files by those names) with this version. But if an older file was already there, it will need to be updated. Just type the file name into Google and you'll pretty much be bombarded with websites to download them from. (or... just ask me!)

GNU General Public License

Wake Up! Pro is not only free of charge, but also free to distribute and modify ("free beer"/ "free speech", as the lingo goes). The source code files for Wake Up! Pro are available on the website.

This program is free software; you may redistribute it and/or modify it under the terms of the GNU General Public License as published by the Free Software Foundation (version 2).

This program is distributed in the hope that it will be useful, but WITHOUT ANY WARRANTY; without even the implied warranty of MERCHANTABILITY or FITNESS FOR A PARTICULAR PURPOSE.

Any distribution of this program must include this text. For the full text of the GNU General Public License, visit <http://www.gnu.org/copyleft/gpl.html>.

What's new in version 2.5

- ⇒ **Better View Preset handling:** A powerful feature in version 2.0/2.1 admittedly had a clumsy interface for setting/switching/interacting. For 2.5, I decided that the way I had alarm controls set up was much better and I had the window controls borrow its layout. Those who are upgrading ought'a love this one.
- ⇒ **Hourly Chime(s):** That's right, just pick a sound and WUP will play it at the top of every hour. *Yeah, like I'd stop there???* Set chimes for any minute (even for all 60!), and they'll each play once an hour. Limit the chimes to certain times of the day and attach up to three sounds to any particular minute. Chimes can also borrow from alarms and alarms can start or stop all chimeage for the day.
- ⇒ **Defeatable Indicators:** The two words on the clock 'LOCK' and 'MANUAL' just got a bunch of new friends, perhaps *too many*. The indicators (and even the date) can be customized or hidden.
- ⇒ **Error Detection:** I've accidentally tried to set alarms for 10:00PM a few times and thought up this feature. Check a box, set a no-earlier-than time and a no-later-than time, and WUP will let you know if you try to set an alarm outside of the range.
- ⇒ **Launch/Closing sounds:** Found in many other programs, why not here?
- ⇒ **Less chaotic randomizing:** If you set an alarm beep to change randomly after each use (so you can't get too used to one sound), WUP might have set the beep too short or to too low a tone a few times. Like error detection, just ballpark a good range of tones and durations and WUP will play by your rules.
- ⇒ **Images for clock background, flat color for chassis:** Before, the chassis could only be decorated with an image file (which didn't wrap around the buttons... that's fixed now) and the clock could only have a solid color behind it. Now either can have either, and a few are even included in the installer!
- ⇒ **Flashing colon:** If you like when the ":" flashes on and off every second on a digital clock and were disappointed that WUP lacked it, well... don't be so disappointed anymore.

Pavement

Pavement is a second, smaller program designed to create/convert the files WUP needs to run. Wake Up! Pro will launch this program if it has an error loading the .INI file. The first time WUP is run, you shouldn't even notice it (or it may give you a message box).

Importing from old versions

Version 2.0/2.1 by Ryan Grabow

Should work beautifully.

Version 1.0/1.1/1.5 by Ryan Grabow

Contact me for the old converter .exe

Versions not by Ryan Grabow

These may or may not use the same .INI format. If Pavement cannot read these files, it will offer you the option of creating an "empty" file (default settings).

The first thing you'll see in the morning

Close window [ESC]
Will end the program or hide the window, depending on settings.

View settings [W]
Change WUPs appearance and access View Presets.

Slim/Panel Toggle [P]
Shows or hides the Panel (buttons below the clock)

Silence [Enter]
Will silence the alarm or prompt you for the shutoff code.

Snooze [Spacebar]
If enabled, this will set the alarm to snooze for the set number of seconds.

Chassis: Click and drag the window

Panel

Alarms [A]
Opens the Alarms Window.

Quick Set [Q]
Allows you to quickly set one-off reminder alarms.

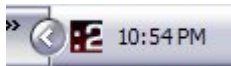
Hourly Chime [H]
Toggles chimeage.

CODE/LOCK/MANUAL/ALARM/ SNOOZE/CHIRP/MSG ("MESSAGE")
Indicators used during alarms

WUP Settings [Ctrl+S]
Opens the main settings window.

SD ("SOUND")
Indicator for when file or system beep is playing.

Clock
Time/Date formats can be customized in the View Presets window. Info displayed with date during alarms.



Taskbar Icon: Available whenever WUP is running. Click to show or hide the clock. Right-click for a menu of basic features.

New View [Ctrl + (number)]: Jumps to user-programmed view preset

Safety Switch [D]: Enables or disables alarms and locked alarms (see section below)

Discrepancy Monitor [Ctrl + L]: Reports how many seconds have been "dropped". Numbers may be high when many other applications are running.

Insert into Log [Insert]/[Ctrl+Insert]: Enters time and date into the log file (if file is set up/ enabled)

View Log [Shift+Insert]: Brings up Wake Up! Pro's log file (determined in the Settings Window)

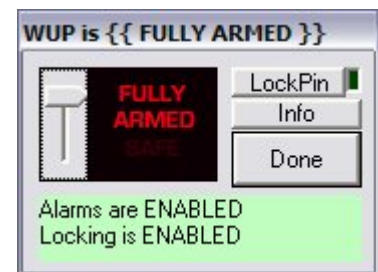
Keeping the Safety on (since it's loaded)

When I tell people about an alarm clock program that can lock and render itself near-impossible to turn off, they won't have anything to do with it. So I thought I'd extend the olive branch to non-alarm users and install a "safety switch". The switch can be accessed by pressing "D" on the keyboard, or by using the button in the Main Settings window. As an added layer of assurance, the LockPin button (named so it wouldn't conflict with alarm "lock") will prevent users from changing the setting accidentally while it is pressed.


FULLY ARMED: Lets WUP use everything it's got to get you the heck out of bed. You still have to program the alarms to be mean, tho.

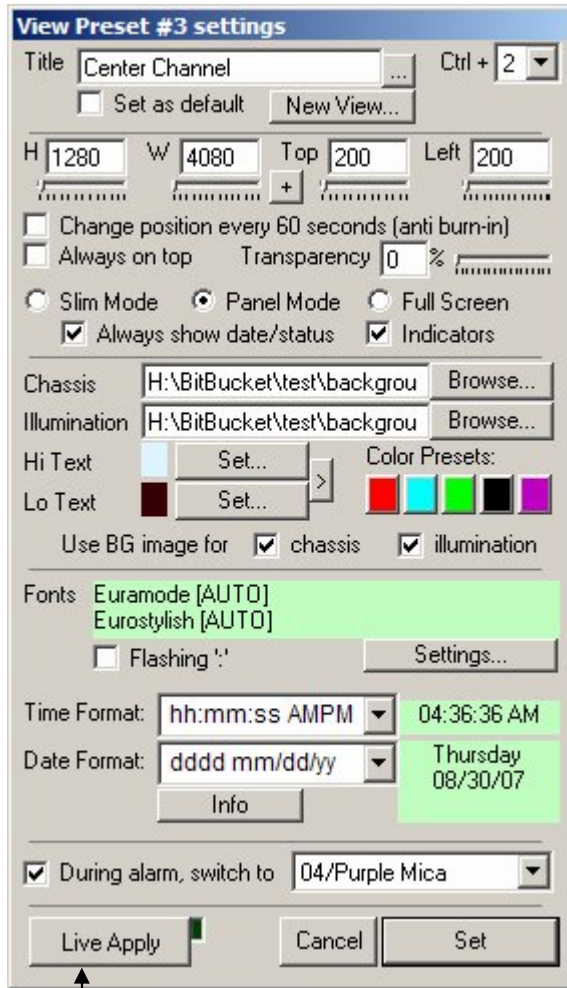
(regular) ARMED: Yes to alarms, no to locking. If you try to set an alarm to lock, WUP will yell at you. If any locked alarms go off, the "locked" part will simply be ignored. *At this setting, Wake Up! Pro is still the best friggin' alarm clock on the planet, it just promises to play well with others.*

SAFE: WUP may not like you much at this setting... little more than a totally customizable clock. The safety switch (shown at right) will pop-up if you try to set an alarm or if one tries to sound. The hourly chime will still function.



As you like it (View Presets)

Version 2.0 introduced more customizable 'view presets', the controls have been revamped for 2.5. To access the view window, click on the  button or press "W" on the keyboard.



Shortcut/ New View

Select a number from the drop-down box and pressing Ctrl+# will make WUP jump to that preset. To base new view presets on existing ones ("propagation"), open the preset and click on "New View", this will create a new preset with the old settings.

Position/ Transparency/ Mode

Determines the position and size of the WUP chassis. Clicking the crosshairs will center the clock on your monitor. For monitors prone to "burn-in", the clock can shift position every 60 seconds.

SLIM MODE: Close, View buttons only

PANEL MODE: Some/all buttons below clock

MAX MODE: Full screen. Position settings effect clock only.

Clock Colors and Images

Sets and previews your clock's color scheme. The "all indicators lit" button (the '>') makes previewing easier. A large image file can be applied to the chassis or clock for an even sleeker look.

Fonts and Formats

Fonts can be automatically or manually sized. Click on the time/date preview boxes to update them (when editing 'Time Format' or 'Date Format'). See box below.

Alarm Switching:

WUP can change the way it looks when an alarm sounds, such as becoming bigger or changing the font colors to red, whatever you like!

Live Apply:

Like a sticky "Apply" button. Preview settings as you change them.

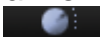
Note: Some controls don't change instantly, try clicking on the Live Apply button twice or on one of the position controls at the top in these cases.

You can set up to 99 view presets, setting 'current view' to default will cause WUP to remember its last settings every time you start it.

Time/Date Formatting: (up to 22 formatting characters)

yyyy = year ("2005")	yy = year ("05")	y = day of the year	ww = week of year	q = quarter of year
mmmm = month name	mmm = month abbrev.	m/mm = month #		
dd = day of the month	ddd = weekday abbev.	dddd = weekday		
h/hh = hour	m/mm = minute	s/ss = second	AMPM = 12hr. format	

Bossing alarms around (all 100 of 'em)

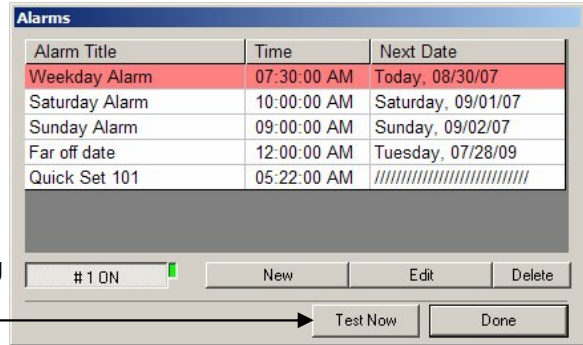
The alarms window can be accessed by pressing the  button or "A" on the keyboard.

You'll see the Alarms Window (right).

Double-click on an alarm to edit it, or press "New" to create a new alarm.

Note: Quick Set alarms are listed but can only be deleted.

Test Now: You can preview your alarms behavior by triggering them manually. Manual alarms can be silenced the intended way (hit ENTER, shutoff code, etc.) or by pressing ESC.



Title & Times:

To simulate the experience of most alarm clocks, set the time and flip the ON/OFF switch a few times... are we having fun yet? Clearly, you can do a lot more here than with most alarm clocks.

Audio settings:

Each alarm can greet you in the morning with the .WAV/.MP3/.WMA/AIFF/MIDI of your choice (no more numbered tones, use any file!), and/or your computers internal system beep. The "incremental volume/ duration" option will start the alarm softly, and raise the volume:

[0-25 loud, 26-50 louder, 51-55 silent, 56-59 loudest]

The tones can also cycle automatically in a predictable or random manner, so you don't get too used to the same alarm tone (and learn to ZZZ through it).

Message:

To remember why you had to resort to WUP to get you up soooooo early! Messages flash underneath the date during the alarm and can be set to pop-up when it's shut off.

Snooze:

9 minutes too long? Too short? Counterproductive? Fuggedaboutit! With WUP, have the Spacebar do whatever you want, even ignore you! If 9 minutes is your bag, type "9M" and 9 minutes will be entered as 540 seconds. You can also limit how many times snooze will work.

Code:

The most fiendish, mad scientist-ish part of Wake Up! Pro. Check the box, set the code, and the alarm won't shut up without it. Codes can change predictably or randomly, and you have control over the degree of change. If "Hidden" is checked, the code in this window will be hidden and the new code (for the next day) will not be displayed in the clock after the alarm is silenced.

Locking:

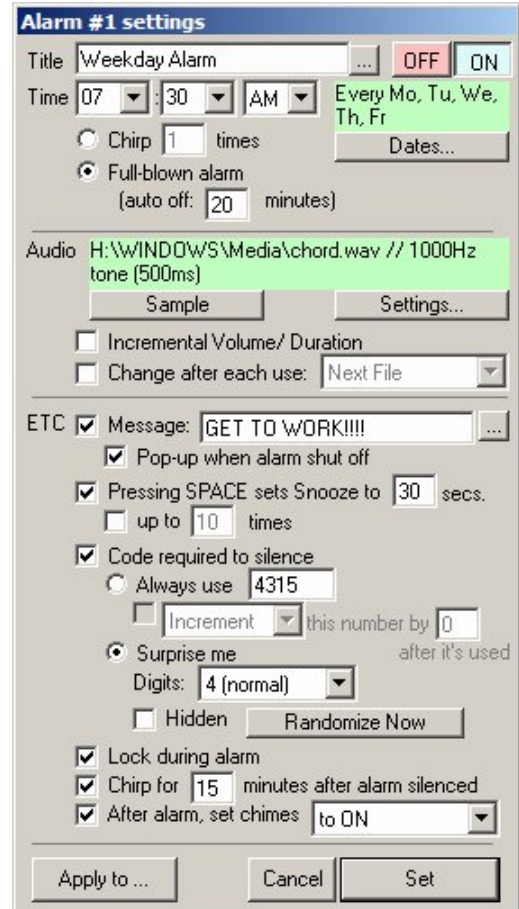
When checked, the alarm will active the locks you've selected in the main settings window (see page 8).

Chirp:

When checked, WUP will continue sounding the alarm tone once every 20 seconds after the alarm has been silenced (to make sure you're not dozing off again, shame on you for even thinking about it!).

Apply to:

Note: Clicking on this will save settings to the current alarm and close the Alarm Settings window. Settings can be applied to another alarm (dates and times are preserved), or to up to 8 new alarms.



“Main” Settings

The last button on the panel (or “Control + S”) leads to the Main Settings window. Here, you’ll find information about the program, the GNU license, and a few tabs for Wake Up! Pro’s program-wide settings.

General Settings:

Decide how Wake Up! Pro handles: When to start, how to start, what to shout back at you when you can’t remember an alarm shutoff code...

Hourly Chime/Signal:

Have Wake Up! Pro tell you when it’s the top of the hour, or any point within the hour. You can set one sound to play all day (as long as chimes are enabled), or up to three sounds to play at different times of the day. Use the Copy/Paste buttons to take one chime setting and use it at different times, easily. Chime “events” can also be tied into alarms, so you can update several chime events at once just by modifying an alarm (alarms created for this can be left ‘OFF’ or used as normal alarms).

Locked Alarms:

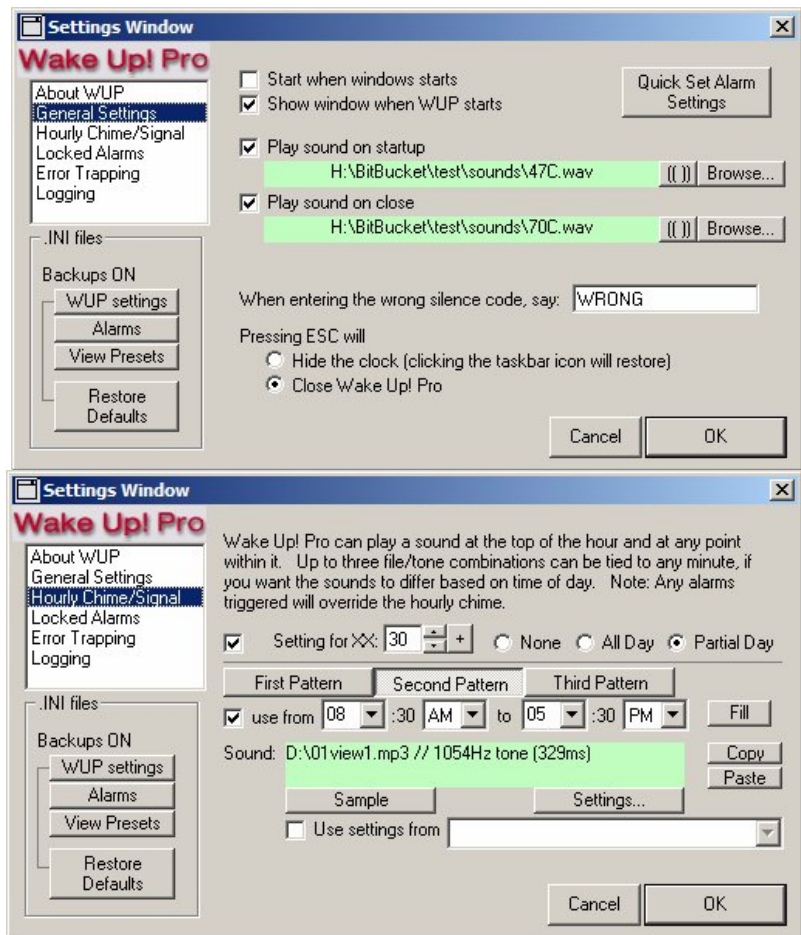
During locked alarms, Wake Up! Pro can make itself very difficult to close. Soft off includes pressing ESC, selecting Exit from the taskbar menu, of logging off. Hard off is holding the power button on your computer or unplugging it.

Error Trapping:

Wake Up! Pro can have yo’ back if you try to set an alarm in a way that it won’t go off.

Logging:

WUP can keep a log of when alarms are triggered, and of other events as well.



Using your computer as an alarm clock

If you just use Wake Up! Pro as a neat little clock that hangs out on your desktop over the course of a day, then there are no hardware issues to worry about. If you do use the program to wake you up in the morning, it's a different story. Sure, you could leave your computer on all night, but not only does that use a lot of electricity, it's also bad for your computer. The best thing to do is get your computer to turn itself on about 10 minutes before a scheduled alarm; unfortunately, I am not aware of any software that does that (if that is an option, though, let me know), so we have to look to hardware...

I test this program on an old Pentium 1 computer. That PC is the one that I use the program with to get me up in the morning. This computer meets my requirements as a PC/Alarm Clock:

1. It's old and not my main computer.
2. It uses an older operating system that accommodates programs that don't want to close.
3. The power switch is flip on, flip off

This computer is plugged into an AC module, the kind Radio Shack sells for home automation, and nearby is a special clock that switches it (and other modules) on and off at specific times. At 6:45am, the clock turns on the module, thereby powering the computer. If I left the switch in the on position, everything fires up and the computer boots into Windows 98. It's set up to log-in automatically and Wake Up! Pro is one of the startup programs, so it loads automatically. After the alarm has woken me up, had me curse it out, and finally unlocked itself (yeah, I use all of the locking features on myself), my conscious self selects "Shut Down", waits for "It's now safe to..." and press the button on the clock to turn off the module and cut power to the computer... until the next mornings mayhem.

I recommend using a secondary, older computer if you really want to get into this PC/Alarm Clock thing, since it's largely something you experiment with. In any case, to make Wake Up! Pro start with Windows, check the option under the "General" section of the Settings Window.

Cranking up your odds

There are many reasons to try out Wake Up! Pro, especially if you're an insomniac, since that's who WUP is designed for. But what about a severe case of can't-get-up-in-the-morning? Well, you're gonna need some kind of special setup for that, good thing you already have the software.

The following is something I've been meaning to try (in addition to the above stuff): Get a floor cabinet with a lock, place the CPU inside it, as well as the speaker(s). Screw this unit into a wall so that it can only be removed from inside the cabinet, try not to expose the AC Outlet you are using since you can shut the computer off by unplugging it (not that anyone would recommend that, ever...). The monitor, mouse, and keyboard could be on top of the desk, with the wires running down small holes in the top of the cabinet. Set up the CPU, make sure the speakers are turned on, then lock the cabinet and put the key somewhere that *morning-you* wouldn't want to go (like your car or place of work).

Congratulations, you have now made it near-impossible to go around the program. Of course, nothing is perfect, whatever turns your computer on (power module) will be able to turn it off at anytime. You just need to keep in mind that hard drive damage will result from that and that maybe it won't be worth another 20 minutes of sleep.

Troubleshooting

<u>Symptom</u>	<u>Why</u>	<u>Fixing it</u>
Installation	OS Incompatibility or security issues.	see Page 3
Alarm/Chime will not sound.	<ol style="list-style-type: none"> 1. Alarm is not on. 2. Not set to go off on this day of the week or date. 3. Selected file does not exist or is not a valid sound file. 4. The Safety is on. 5. WUP thinks <i>it is</i> playing a sound 6. Computer speakers off. 	<ol style="list-style-type: none"> 1. Check the Alarms Window. 2. Access the settings and make sure they are correct. 3. Try a different file or use the internal beep instead. 4. Ctrl + D 5. Click the “SD” indicator, it should go out if it isn’t already. 6. <i>Like I have to tell ‘ya?</i>
Alarm is silent during certain parts of a minute.	<p>Volume is wayyyy low.</p> <p>Note: <i>Silence is normal between the 51st and 55th second if “Incremental Volume” checked</i></p>	Start Menu > Accessories > Entertainment > Volume Control
Alarm will not lock.	1. The Safety is on.	1. Ctrl + D
Program will not close.	There is a locked alarm in progress.	Wait for the countdown to finish, then go to: Settings window > “Lock”
Alarm sounds whenever program is started.	The “hard off” option is checked and a locked alarm was not shut off properly.	In the program folder, open “alarmon.ini” and change the number to 0.
Clock is hidden and the taskbar menu won’t bring it back.	<ol style="list-style-type: none"> 1. Clock was dragged off the screen. 2. <i>Common program glitch</i> 	<ol style="list-style-type: none"> 1. Use “Resume Default” in the taskbar menu. 2. Open the View Presets window (from the taskbar menu), use Live Apply to coerce it back to visibility.
Pavement hides in the corner and will not restore.	<i>This is a friggin’ weird problem I haven’t traced yet.</i>	<i>Check the website for updates or e-mail me.</i>
Clock doesn’t show proper time or date	<ol style="list-style-type: none"> 1. Invalid date or time format 2. Clock is [PAUSE]d 3. Computer clock is wrong 	<ol style="list-style-type: none"> 1. Go to the Main Settings window and select a format from the drop-down list. 2. Press “Delete” on the keyboard. 3. Check your taskbar clock
Other problems...	see website or e-mail me	see Page 2

Good luck and have fun...